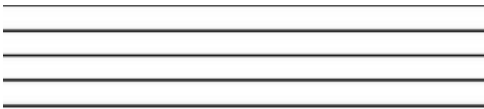
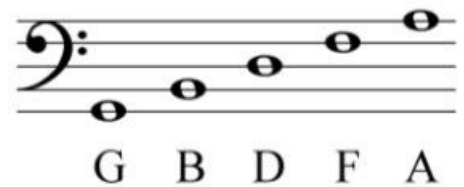
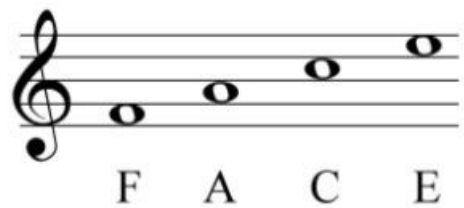
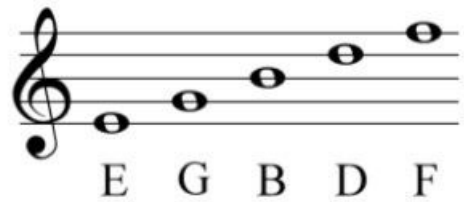
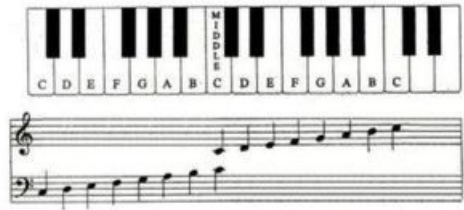


Musical Notes

Category	Game
Type	Relay game
Time to allocate (mins)	15



A Staff





Instructions

"Common Time"

4 Four beats per measure
4 Quarter note gets the beat

"Cut Time"

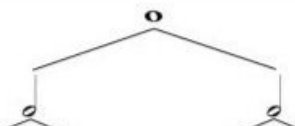
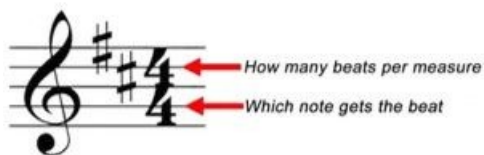
2 Two beats per measure
2 Half note gets the beat

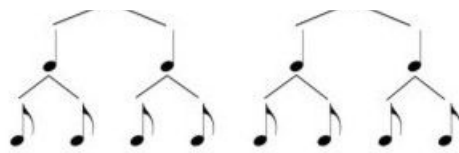
"Waltz Time"

3 Three beats per measure
4 Quarter note gets the beat

"6/8 Time"

6 Six beats per measure
8 Eighth note gets the beat





Whole Note = 4 Beats

Half Note = 2 Beats

Quarter Note = 1 Beat

Eighth Note = 1/2 Beat

Draw 5 parallel lines on the ground in chalk (or

lay out five ropes)

This is called a staff

Add a picture of a Treble Clef and or Base Clef on the left. You can start with one and switch or just choose the treble clef

Label each line and space with the correct notes - you can remove these later when the Cubs have learnt them and you can test their memory

Cubs to come up one at a time and throw a bean bag or stone onto the staff. They need to give the note from memory once they have had a chance. If you have an app or musical instrument available, you can play the note they landed on and once they have all had a chance, you have a "composition" made by the Cubs